

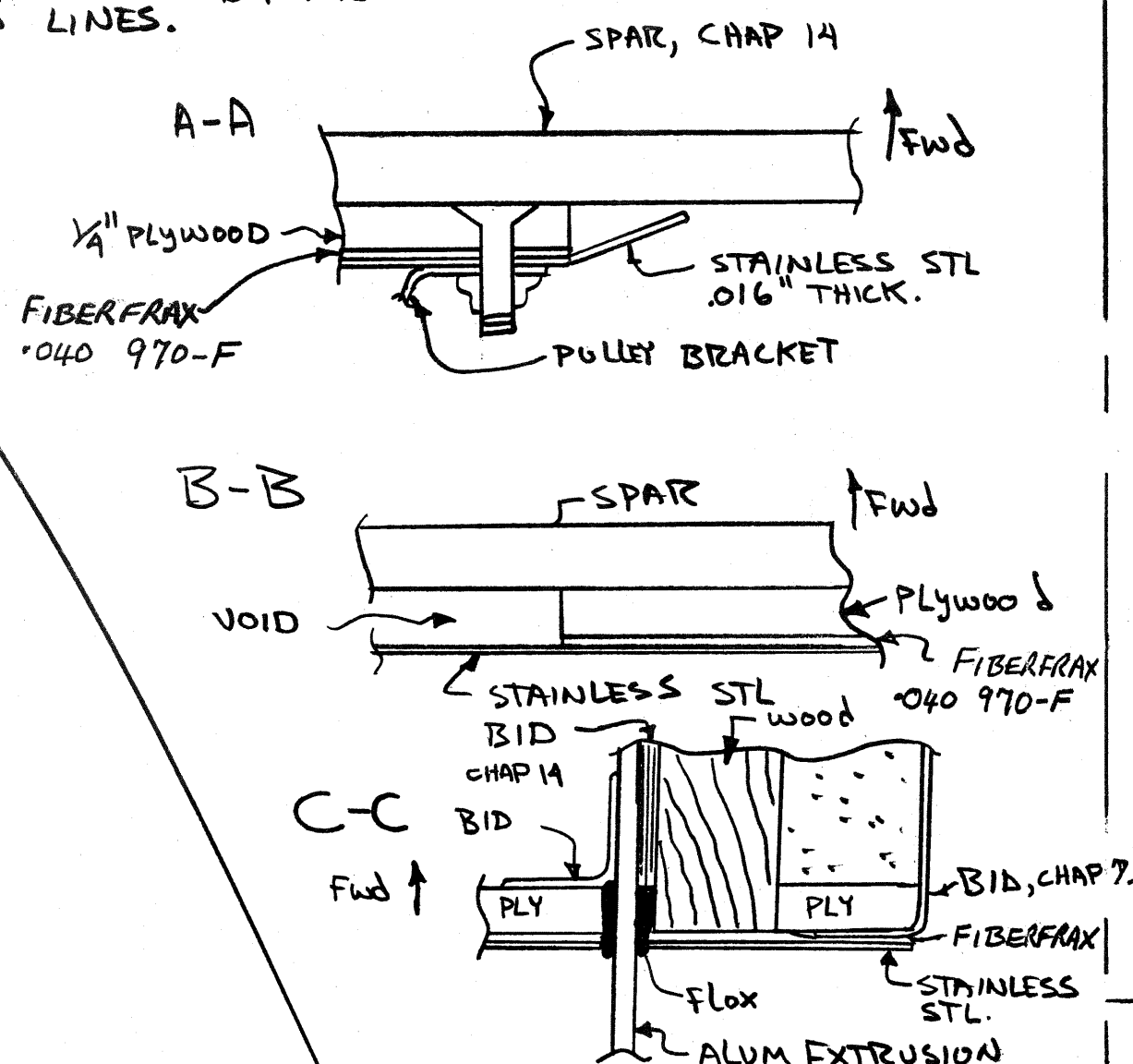
Q = B.L.O.

NOTE STAINLESS STEEL FIREWALL IS NOTCHED TO CLEAR THE SIX SCREWS AND FOUR EXTRUSIONS. IT IS THE SAME OUTSIDE DIMENSION AS THE PLYWOOD FIREWALL EXCEPT FOR THE LARGE CUTOUT AND THAT THE STAINLESS EXTENDS FURTHER OUT THE SPAR AS SHOWN BY THE DASHED LINES.

TOP OF FIREWALL BKHD

W.L. 30

UPPER RT FIREWALL BKHD
LEFT IS SYMMETRICAL



PLY AND STAINLESS

BL 8.7

EXTRUSION,
CHAP 6

CENTERSECTION SPAR

CUTOUT IN PLYWOOD ONLY

WOOD LONGERON

SPAR

STAINLESS
PLYWOOD

PAPER JOINT

JOIN HERE TO DRAWING
AT RIGHT.

Q

CUT PAPER HERE - JOIN TO DRAWING AT LEFT

LOWER RT
FIREWALL
LEFT IS SYMMETRICAL

LARGE HOLE IS CUT IN
1/4" PLY WOOD TO SAVE
WEIGHT. NOT CUT IN
STAINLESS. SEE SECT B-B.

CENTERSECTION SPAR

W.L. 10

BRAKE LINE HOLE
CHAP 9

EXTRUSION,
CHAP 6

CS15 ASSY
CHAP 15

CS11 .064 2024T3
CHAP 15

AN4-11A
(2) AN960-416
MS 21042-4

AN3-6A
AN960-10
MS 21042-3
4 PLACES

AN3-6A
AN970-3
MS 21042-3
CS 17 SPACER
CHAPTER 16

SLOT FIREWALL TO
CLEAR CABLE WITHOUT
CHAFING.

WOOD LONGERON.

PLY AND STAINLESS